

Preparing Your Child for Primary Education



Ministry of Education
SINGAPORE



Presentation Outline

1. What are we preparing our children for?
2. What are our schools doing to prepare them?
3. How can you support your child?
4. Useful resources for parents

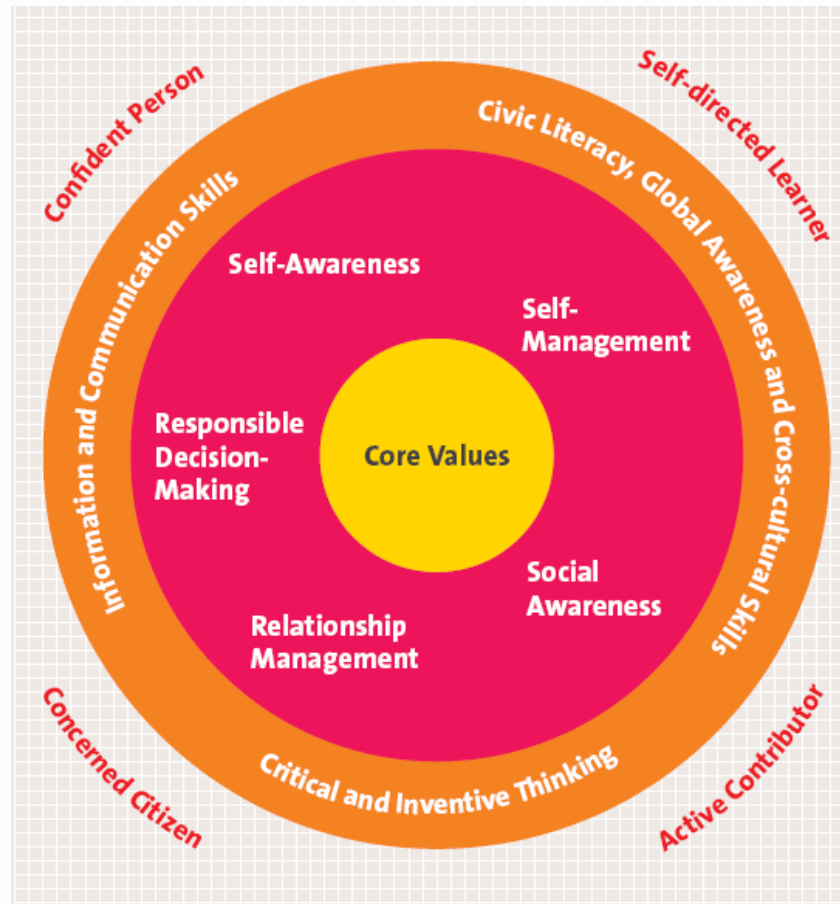


Preparing our Young for the Future

- The world is increasingly Volatile, Uncertain, Complex and Ambiguous
- To prepare students for the unknown: what students can do with what they know more important than what they know

21st Century Competencies

Preparing our Young for the Future



A Student-Centric, Values-Driven Education

A Broad and Deep Foundation for a Lifelong Journey



**Focusing on 10 years of quality basic education
that goes beyond academics...**

1. Broad and Inclusive Approach and Providing Each Child with a Broad and Holistic Education
2. Deep values, Deep Commitment to Singapore and Deep Foundation for Learning
3. Learning for Life and Lifelong learning

Where is My Child at This Stage?

- Formative years
- Early stages of learning
- Discovering abilities & talents



Aims of Primary Education

- Nurture the whole child (holistic education)
- Lay a strong foundation
- Prepare the child for the future



Programme for Active Learning (PAL)

- More opportunities for your child to participate in non-academic activities during curriculum time
- Discover new interests, develop a range of skills and build character
- PAL is being progressively rolled out



More Engaging Teaching Methods

Make lessons come to life

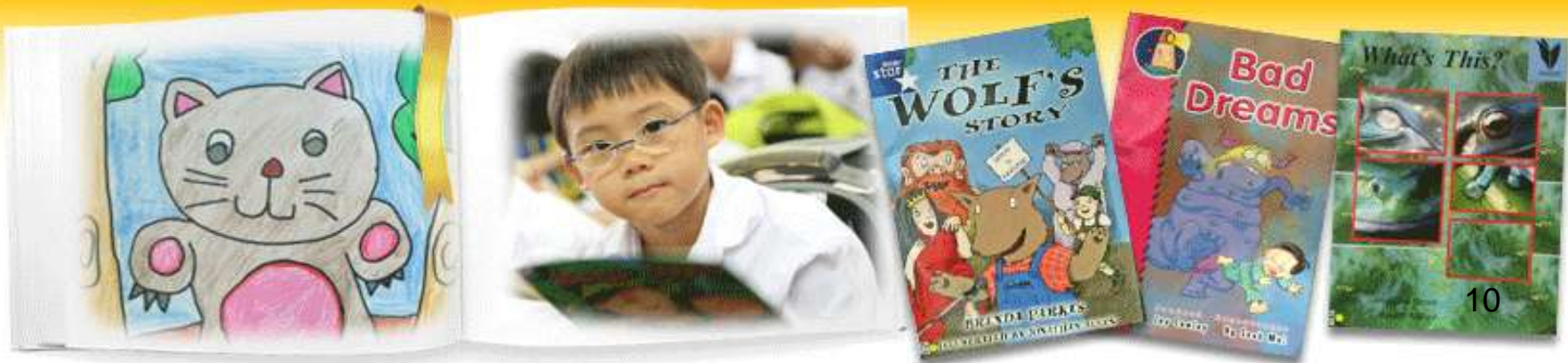
- Active and creative learning strategies
- Investigative tasks, experiments
- Role-play, drama, outdoor activities etc



Creative teaching methods mean a more enjoyable learning experience

STELLAR programme

- STELLAR stands for “Strategies for English Language Learning And Reading”
- Children learn through shared reading and shared experiences.



Holistic Assessment

- Building child's confidence and desire to learn
- Assessment focus more on information on learning progress
- Richer feedback on your child's development



Pupil Portfolio



Pupil Progress Card



Pupil Report Card



Enhanced School Facilities to Support Holistic Education

- Single Session Primary Schools – creating more space & time for learning
- All primary schools will transit to single session over the next few years
- School hours may be extended by 1-2 hours on certain days for non-academic activities
- NOT full-day schools



Enhanced School Facilities to Support Holistic Education

New Design Norms for Primary Schools

- Redesigned classrooms, performing arts studios etc



Enhanced School Facilities to Support Holistic Education

Redesigned Classrooms



Display
space

Storage
space

Enhanced School Facilities to Support Holistic Education

Synthetic Turf Systems



Indoor Sports Hall



Support for Your Child in School

- Primary One Orientation
- Buddy systems – older students partnered with younger ones
- Trained student counsellors



Through Primary Education...

We want our children to be :

- Confident
- Self-Directed Learners
- Active Contributors
- Concerned Citizens



Home-School Partnership

Parents are important partners in education





Easing into Primary 1

Help your child know what to expect:

- Discuss the new routine, school rules etc.
- Show your child pictures of his new school and explore the school's website together
- Participate in P1 Orientation
- Let your child know who he/she can turn to when he/she needs help
- Encourage your child to mix with other children



Easing into Primary 1

- Learn to let go so your child can learn to be independent
- Praise your child for his/her efforts
- Pay attention to your child's needs and fears
- Make time for fun and play

Support Your Child through Primary School

Develop a love for learning:

- Read to or with your child daily, especially up to his/her lower primary school years
- Bring your child to the library regularly to read and borrow English and mother tongue language books



Support Your Child through Primary School

Support self-directed learning:

- When your child enters primary school, help your child develop good homework habits and time management skills
- Create a conducive learning environment at home



Support Your Child through Primary School

You can also:

- Set reasonable goals with him/her
- Focus on developing your child's strengths
- Emphasise the learning process instead of exam results
- Avoid comparing your child's performance with that of others





Support a Healthy Lifestyle

Ensure your child has:

- Sufficient sleep
- A balanced diet
- Unstructured play
- Outdoor activities in the day

Working Hand-in-Hand

E.g. Parent Support Groups, volunteering in school for reading programmes and CCAs etc.





Websites

- MOE Website (www.moe.gov.sg)
- Parents in Education (PiE) (<http://parents-in-education.moe.gov.sg/>)
- Schoolbag – online newsletter for parents (schoolbag.sg)
- MOE on Facebook (www.facebook.com/moesingapore)

http://parents-in-education.moe.gov.sg/



[Feedback](#) [Contact Us](#) [Sitemap](#) [FAQ](#)

Search



What's Happening



[Authentic Learning Experience at Crest Secondary School](#)

[Learning Life's Lessons through Art at Naval Base Secondary School](#)

[Empowering Students with Special Needs](#)

[Northbrooks Secondary School Students Take Flight](#)

[Every School A Good School - A Parent's Perspective](#)

[Fostering Strong Partnership among Parents, Teachers and Pupils through Interactive Dialogues](#)

As a parent, you have a unique overview of the home and school environments that will greatly influence your child's attitudes, beliefs, values and behaviour. You want the best for your child and to help your child get the most out of his/her school experience. As schools make the shift to 21st century learning, today's classrooms would differ greatly from what you remember of your classroom when you were a student. Guiding your child through this exciting educational journey is a wonderful privilege that parents and educators share. We invite you to navigate and access the resources and information on this website – a website intended to bring you into the shared journey of educating your child.

Our Videos

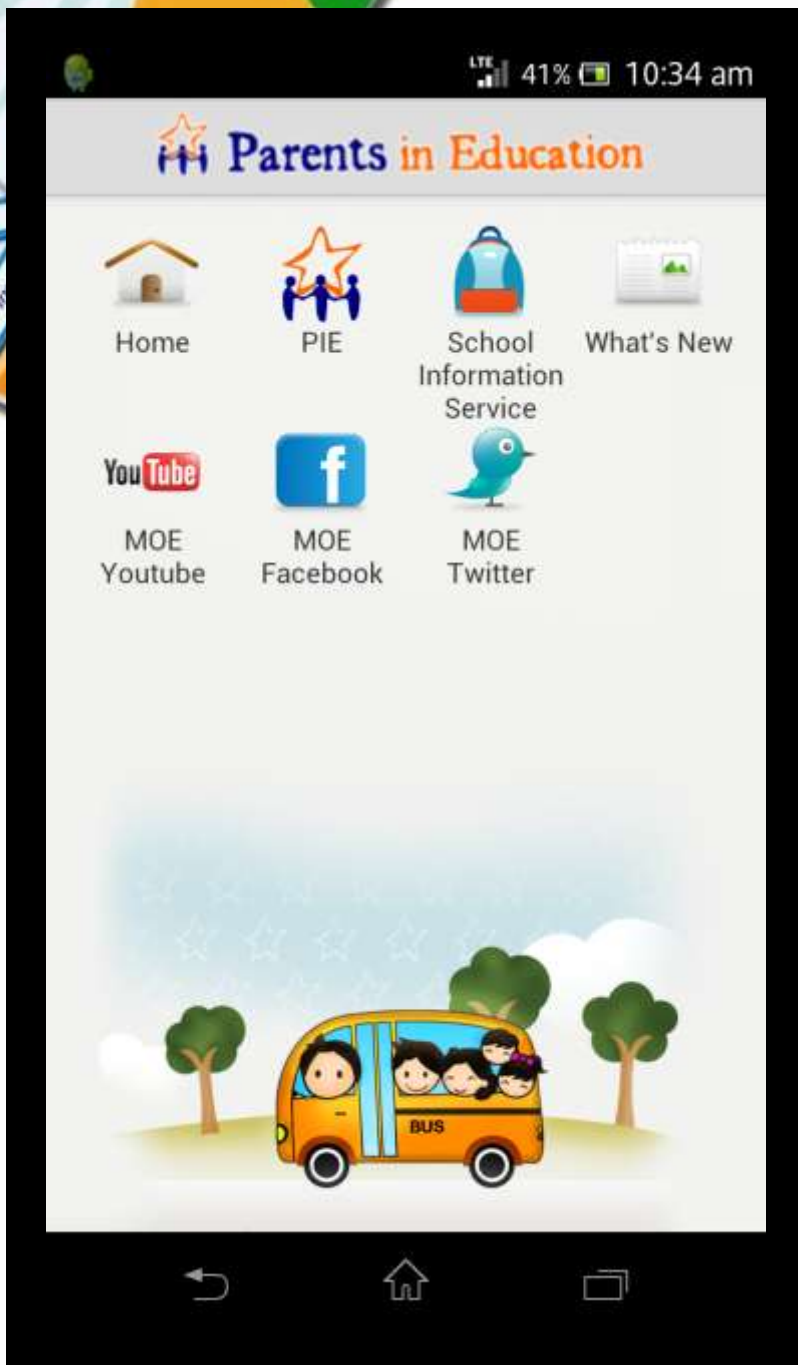


Transition to Primary One

[First Week of P1](#)

[Parenting for the Teenage Years](#)

[Forum Theatre on Managing Parent-Teen Relationships](#)



**Download the
Parents in Education
(PiE)
mobile application!**



www.facebook.com/moesingapore



Ministry of Education, Singapore
71,467 likes · 2,057 talking about this

Government Organisation · Education
Welcome to the official Facebook page of the Ministry of Education (MOE) Singapore! Visit us at www.moe.gov.sg or email us at contact@moe.gov.sg.

About – Suggest an Edit

Photos Likes WPS 2013 Twitter

Highlights ▾

Post
Write something...

276 Friends
Like Ministry of Education, Singapore

Invite Your Friends to Like this Page

The image features a central white background with the text "Thank You" in a large, bold, black font. Surrounding this central area are various school supplies. In the top-left corner, there is a workbook cover with a green hexagonal logo containing the number "1", the word "Workbook", and a yellow banner that says "Over 300 Questions to test your grammar knowledge!". Below the logo is a blue arrow pointing upwards with the word "Primary" written inside. In the top-right corner, a red pencil holder contains several sharpened colored pencils in shades of green, purple, blue, red, and yellow. In the bottom-right corner, a blue pencil case with a fruit design (lemons and oranges) and the word "Fruitage" is visible. Next to it is a black circular pencil sharpener and three more sharpened colored pencils (red, green, and purple) lying on a yellow and orange surface.



Additional Content

Special Programmes to Meet Students' Needs





Learning Support Programmes

Learning Support Programme (LSP-EL)

Aim: provides additional learning support to pupils in the English Language at the time they enter P1

Learning Support for Mathematics (LSM)

Aim: provides additional learning support to pupils in Mathematics at the time they enter P1





School-based Dyslexia Remediation

- Dyslexia intervention programme available in 42 primary schools
- Systemic screening process in P2 to identify students with dyslexia
- Identified students go through school-based dyslexia remediation in P3 & P4
- Programme conducted in small groups by trained school personnel

