



Direct School Admission (DSA)

Entering a secondary school



PSLE/S1 Posting Exercise

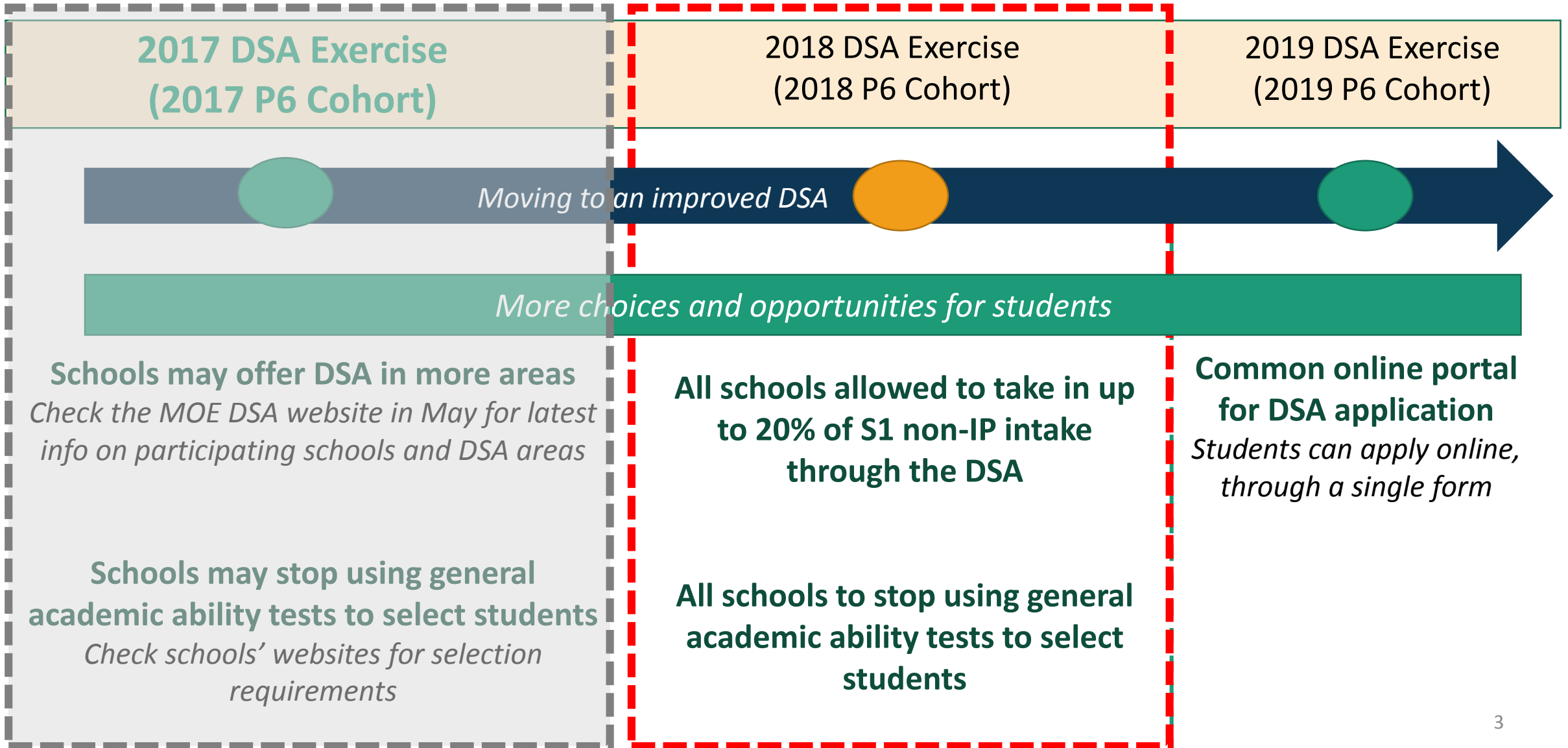
- Based on a student's **PSLE score**
- **Most students enter secondary schools this way**



DSA

- Based on a diverse range of **talents and achievements in specific academic subjects or non-academic areas, beyond what the PSLE recognises**
- Allows students to **access school programmes to develop their talents**

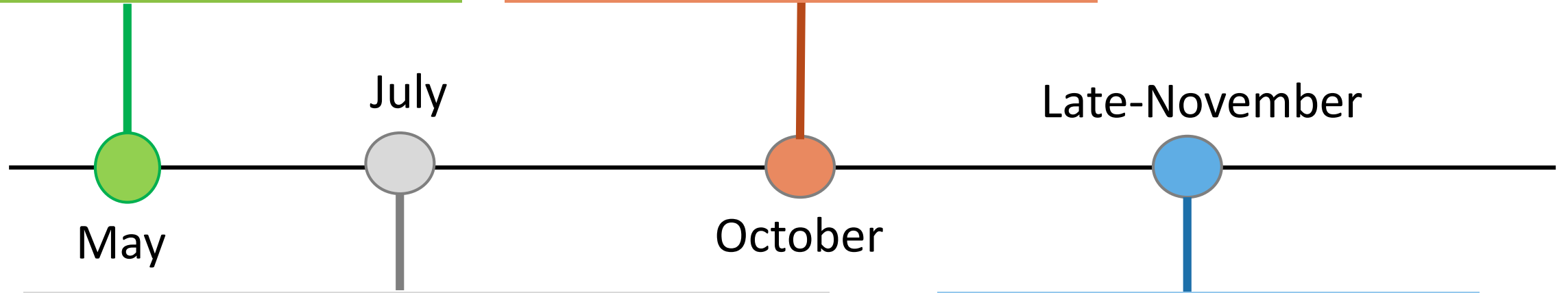
Changes to the DSA



What is the timeline for a typical DSA-Sec Exercise?

DSA exercise starts. Apply through schools.

Indicate up to 3 ranked choices if you have more than 1 offer



May

July

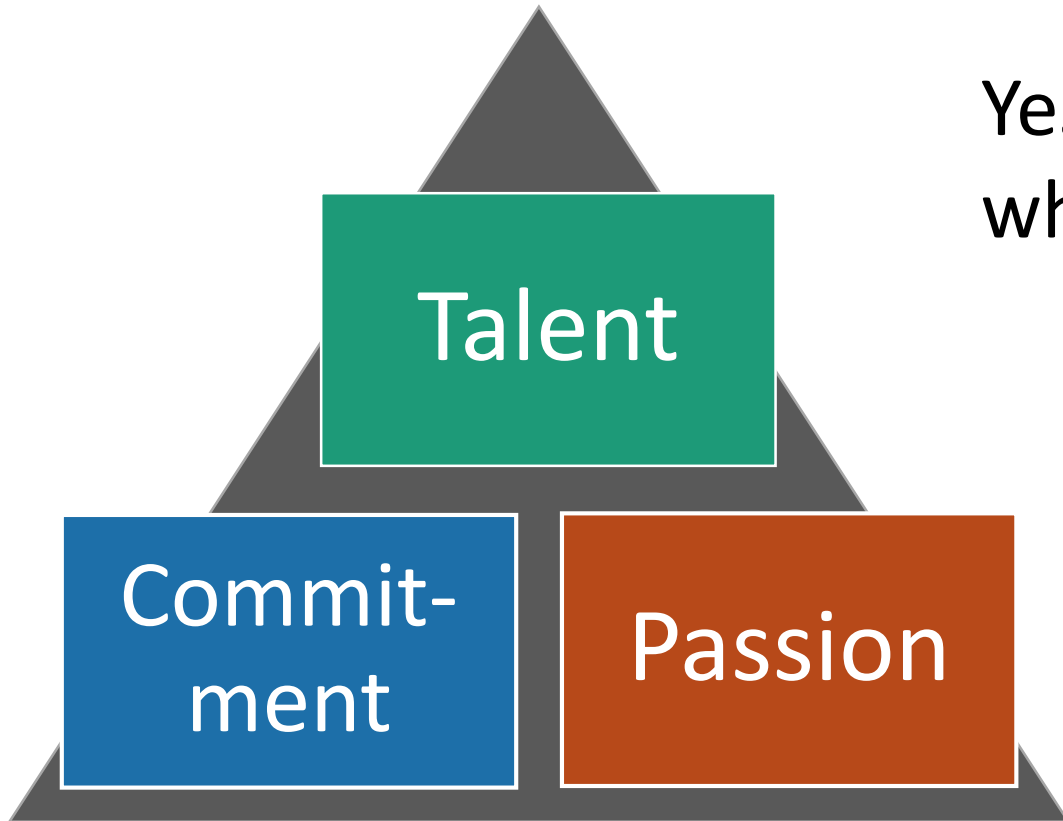
October

Late-November

Shortlisting and selection by secondary schools. Each secondary school has different selection criteria for its categories and programmes. Schools will inform you of the selection outcome by Aug.

You will know whether you have been allocated to a school through the DSA, at the same time you receive your PSLE results.

Is the DSA right for me?



Yes, if you have **talent in an area** which a school offers the DSA in

And are **passionate** about and **committed** to developing your strengths **in that area in that school**

Which school should I apply to?

- Look for a school whose **programmes match your interests and talents**
 - Schools are looking out for students whose interests and talents they can develop further.
- **Get the latest information** about what each school offers by:
 - Visiting the MOE's DSA website (will be updated by early May 2018): <https://www.moe.gov.sg/admissions/direct-admissions/dsa-sec/overview>
 - Visiting school websites
 - Attending schools' Open Houses

Other important questions to ask

- **Am I able to cope with the school's academic curriculum?**
 - Learn more about the school's academic standards
 - Consult primary school teachers and your parents
- **How many schools should I apply to?**
 - Instead of applying to many DSA schools, what matters more is choosing 1 or 2 schools that are just right for you. Remember every application takes time and effort.
 - **9 out of 10 students participating in the DSA **apply to fewer than 3 schools.****

What are schools looking for?

Every school has a slightly different set of selection considerations and processes. Some organise **auditions, trials, tests, selection camps etc.** depending on the talent that is being assessed. Some may require **personal statements and/or character references**. Generally, schools are looking for candidates with:

Talent, passion, commitment

- Schools may ask you to submit a **portfolio** showcasing your talents and achievements e.g. participation in the Junior Sports Academy or other programmes/competitions

Strong personal qualities

- Schools may look at your CCA record, participation in VIA, personal statements, or character references

Good academic fit

- Schools may look at your Primary school results

*Be sincere, be genuine, and **be yourself** – if you are a good fit for the school, it **will** show.*

What are the possible DSA outcomes?

- **CO - Confirmed Offer** → You have a place reserved in the school as long as you qualify for a course the school offers [i.e. Express, Normal (Academic) or Normal (Technical)].
- **WL - Wait List** → This means you will only be considered if other students with Confirmed Offer choose not to go to that school during the School Preference stage. Allocation will be based on students' rank on the school's Wait List.
- **Unsuccessful** → If you are unsuccessful in all your applications, but still wish to enter the schools you applied for in the DSA, you can consider them again during the S1 Posting Exercise based on your PSLE results.

How are DSA places allocated?

Example: Confirmed Offer vs Being Wait listed

Achievement Secondary School placed John on the Wait List. John selected Achievement Secondary as his 1st choice.

Ahmad is given Confirmed Offer by Achievement Secondary. Ahmad selected Achievement Secondary as his 2nd choice.

Who will be considered for a place in Achievement Secondary?

Ahmad will be considered for a DSA place in Achievement Secondary, before John, as he has a Confirmed Offer.

If I have a DSA Confirmed Offer, does it mean that my PSLE results will not matter?

- Your PSLE results will still be **used to determine the secondary school course you are eligible** for [i.e. Express, Normal (Academic), Normal (Technical)]
- Even if you have a confirmed offer, you **must qualify for a course offered by the school** to be successfully admitted through the DSA.

Example:

Jane has a DSA confirmed offer given by Achievement Secondary School, which offers the Express Course only. However, Jane's PSLE results qualify her for the Normal (Academic) course. Hence, Jane will not be able to go to Achievement Secondary School and will take part in the S1 Posting Exercise.

Thank you!